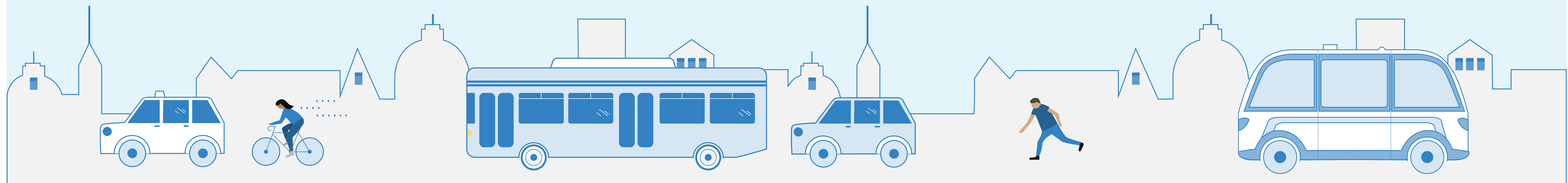
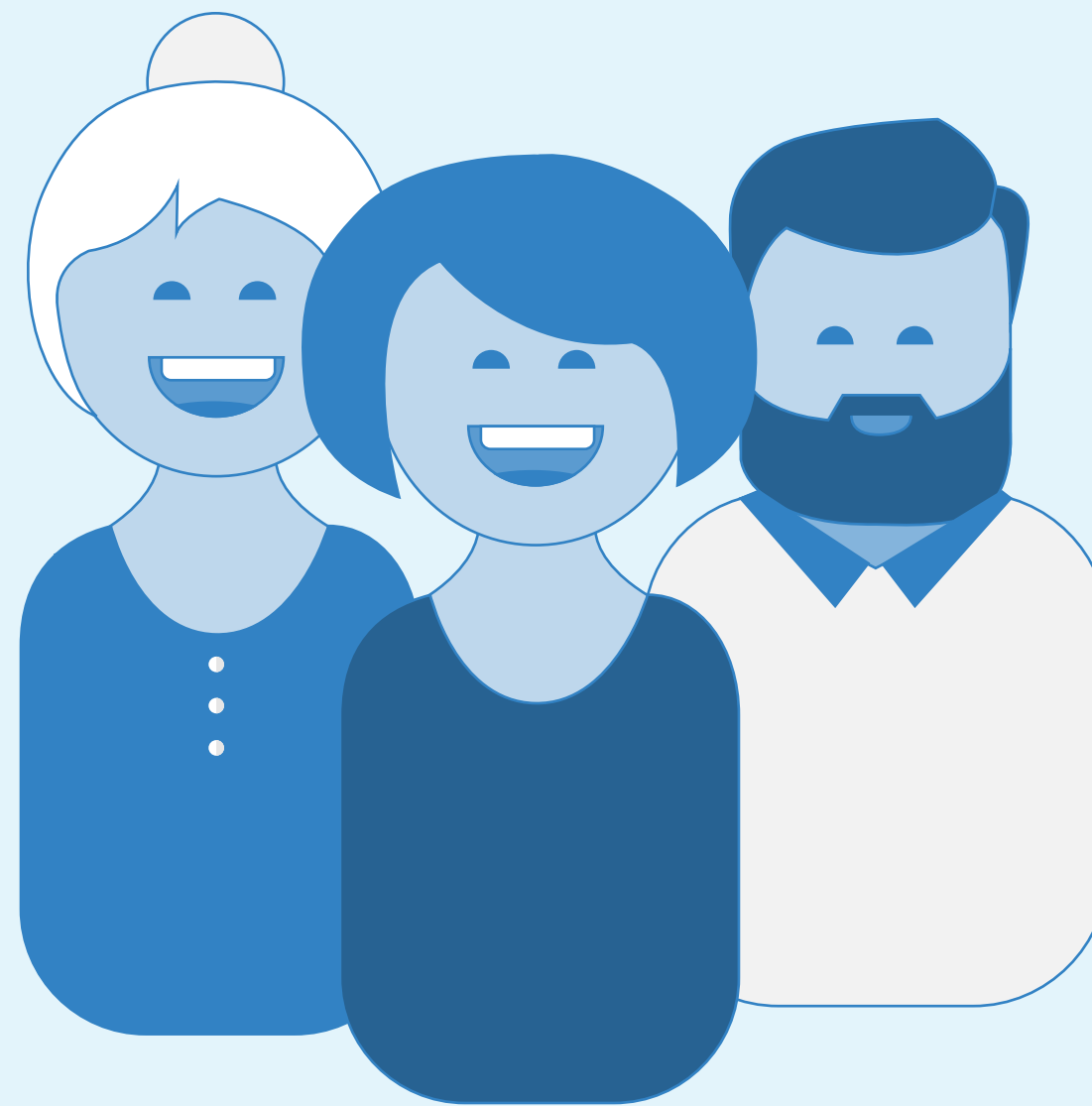


# Berlin Open Data Day

07 Juni 2016



## about ally



## The ally vision:

The Operating System for  
autonomous, demand-  
responsive urban transit.



Vehicle by Local Motors

**Cities are full of busy people**

# ally around the world

With offices in Berlin and Porto Alegre, we are an international company



## ally team

---

The ally team is comprised of 35 people from 20 different nations, with outstanding skills and expertise in application and platform development and machine learning capabilities.



# Management team

Entrepreneurial passion,  
industry experience and a  
clear vision of tomorrow's  
urban mobility.



**Maxim Nohroudi**  
Chief Executive Officer



**Tom Kirschbaum**  
Chief Operations Officer



**Jay Barker**  
Chief Technology Officer



# ally – a leading innovator in urban mobility

ally is a multi-award winning startup that has gained recognition across the industry



**Alexander Dobrindt**  
Federal Minister of Transport and Digital Infrastructure



**Dr. Karl-Thomas Neumann**  
Executive Vice President & President Europe  
General Motors



Co-Founder Tom @ IAA 2015



Co-Founder Maxim @ IT-Summit 2015

Viable traction  
for partnerships  
and strategic  
relations

## Automotive

VOLKSWAGEN

GENERAL MOTORS



**BOSCH**

## Transport



**amadeus**

**BOMBARDIER**  
the evolution of mobility

**PTV GROUP**  
the mind of movement

## Infrastructure

**SIEMENS**



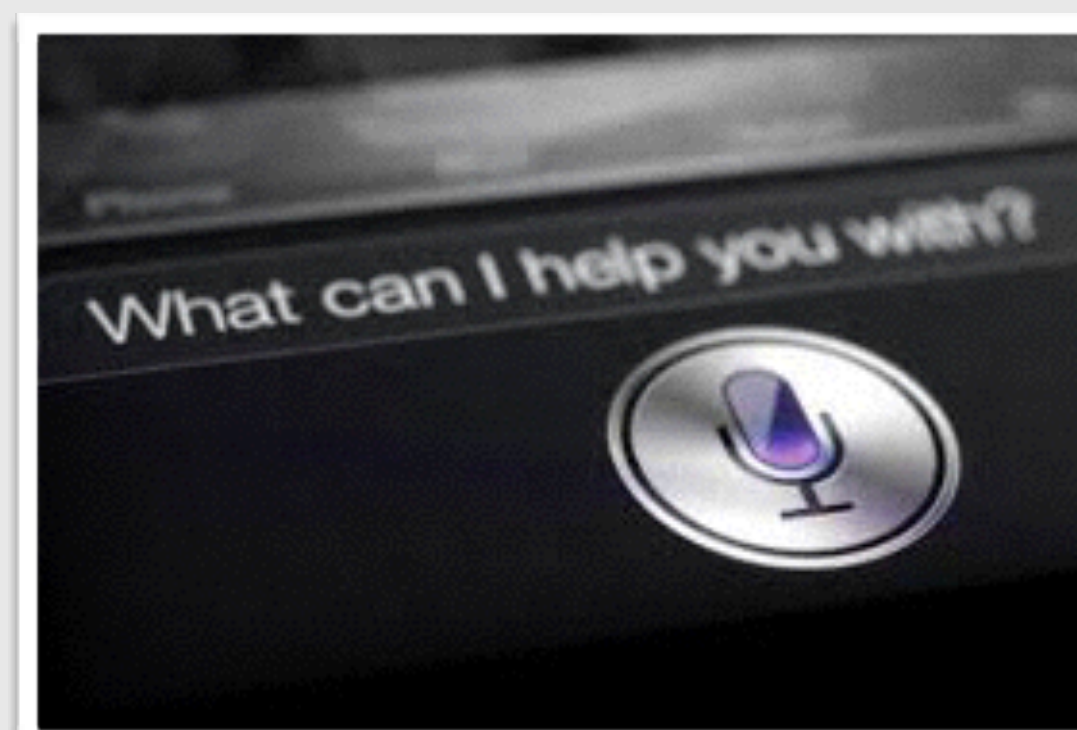
# The ally perspective on urban mobility



# The status quo of mobility



1980s



Today



## The status quo of mobility



# The status quo of mobility



1980s



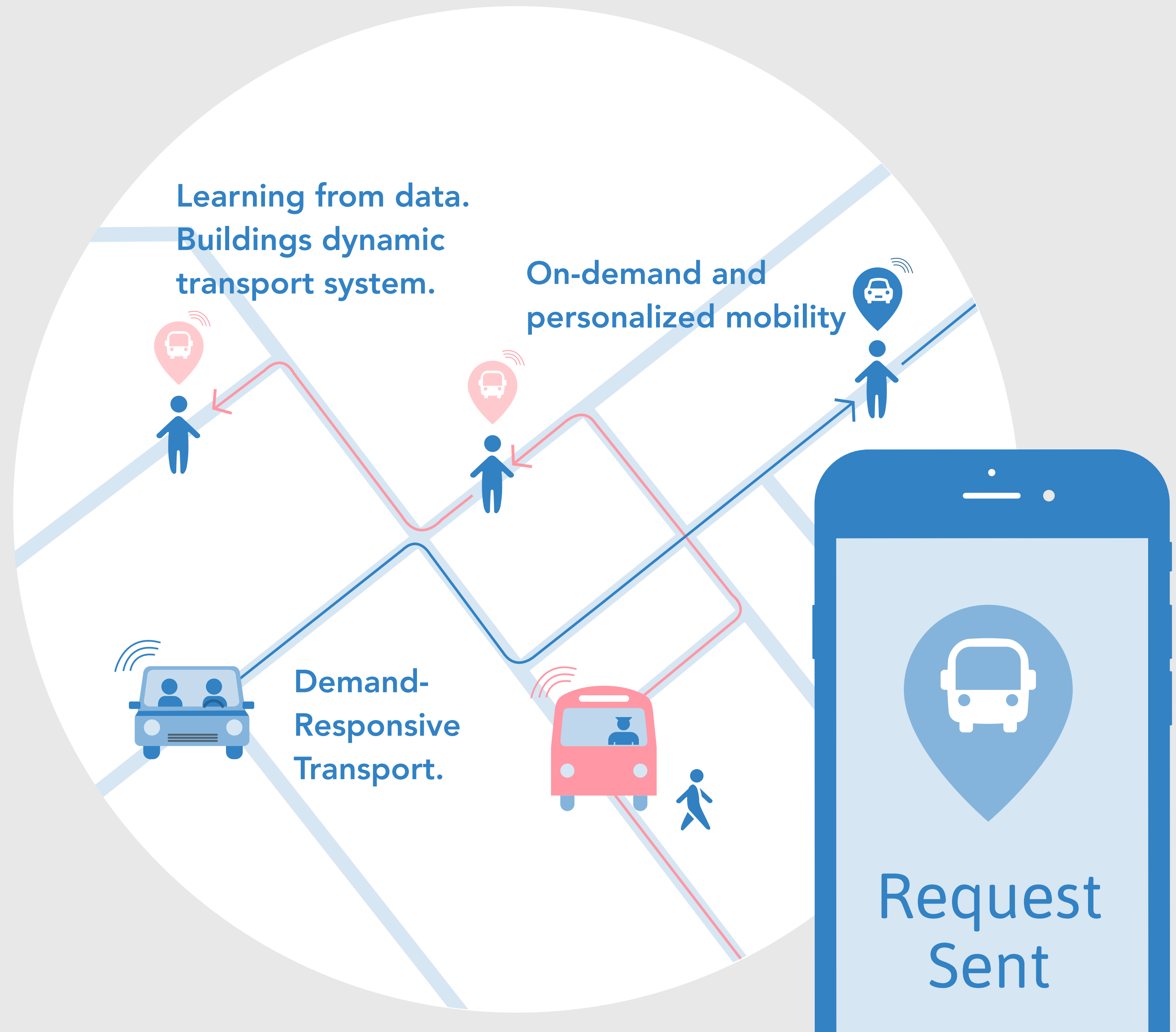
Today

# Future of urban mobility



# The future of mobility

## Personalized public transport



Less  
traffic jams.



Less  
emissions.



Less  
parking space.



Enjoying  
personalized  
transport.



## The ally vision:

The Operating System for  
autonomous, demand-  
responsive urban transit.

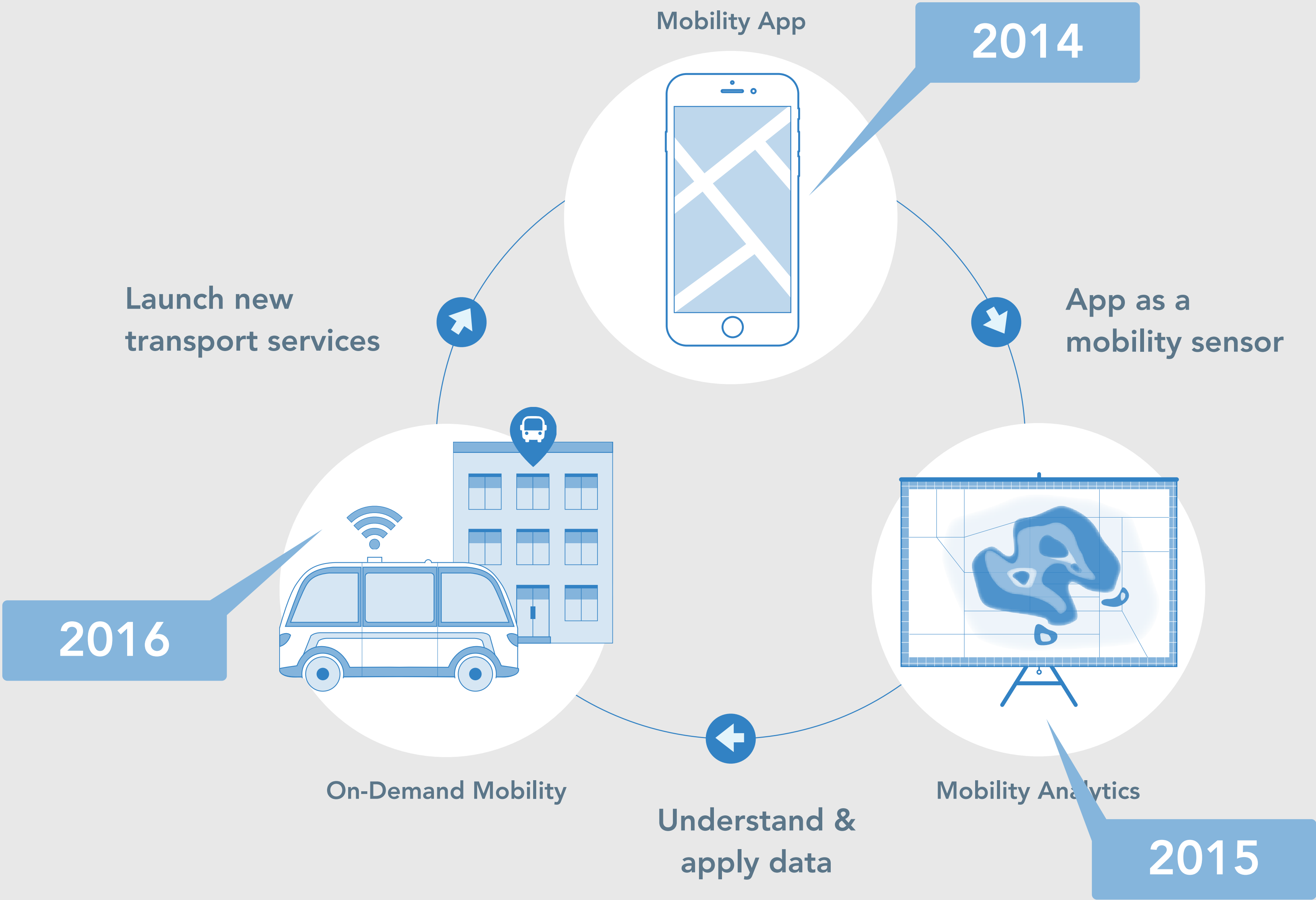


Vehicle by Local Motors

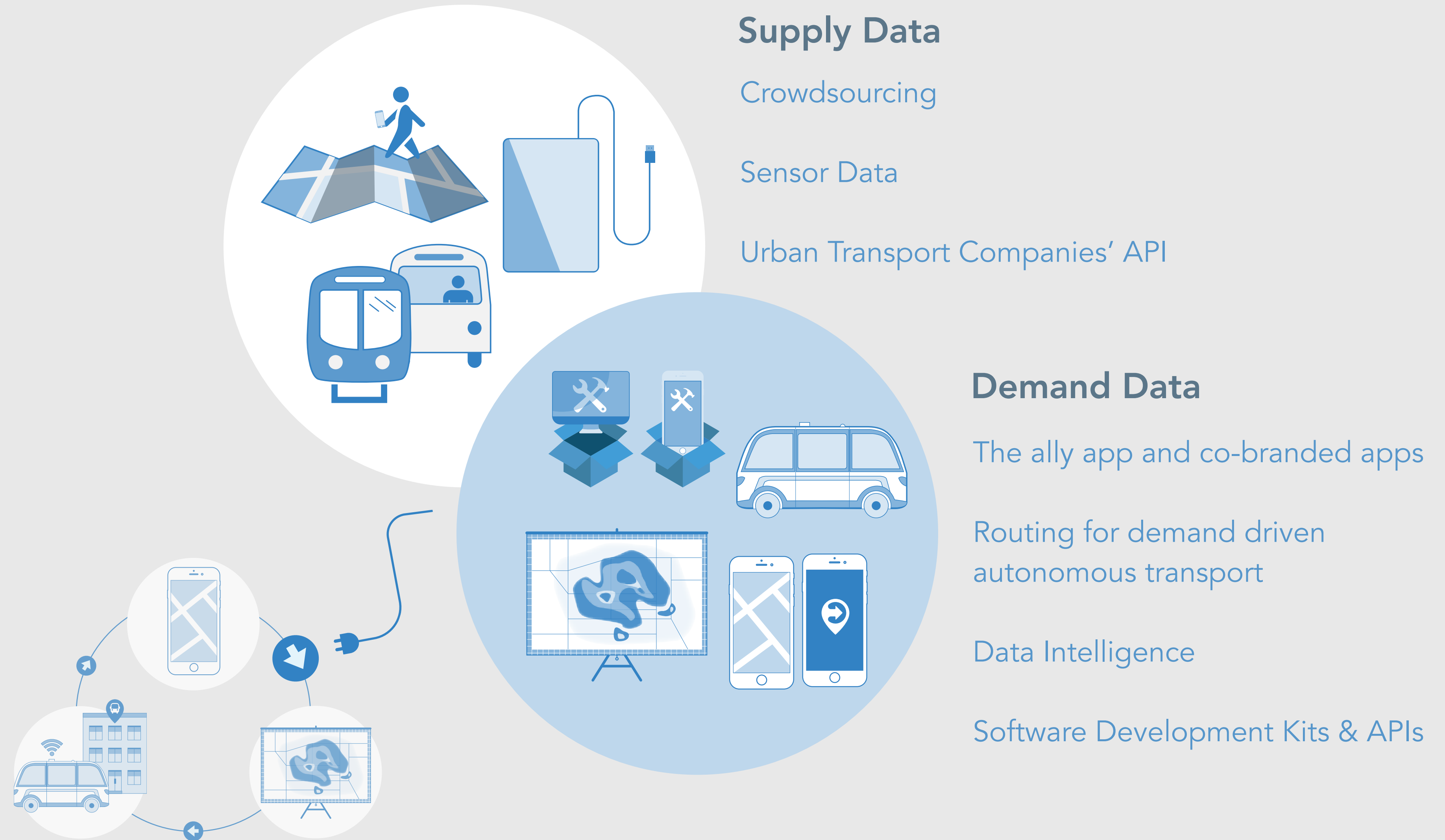
# ally ecosystem



# The ally ecosystem

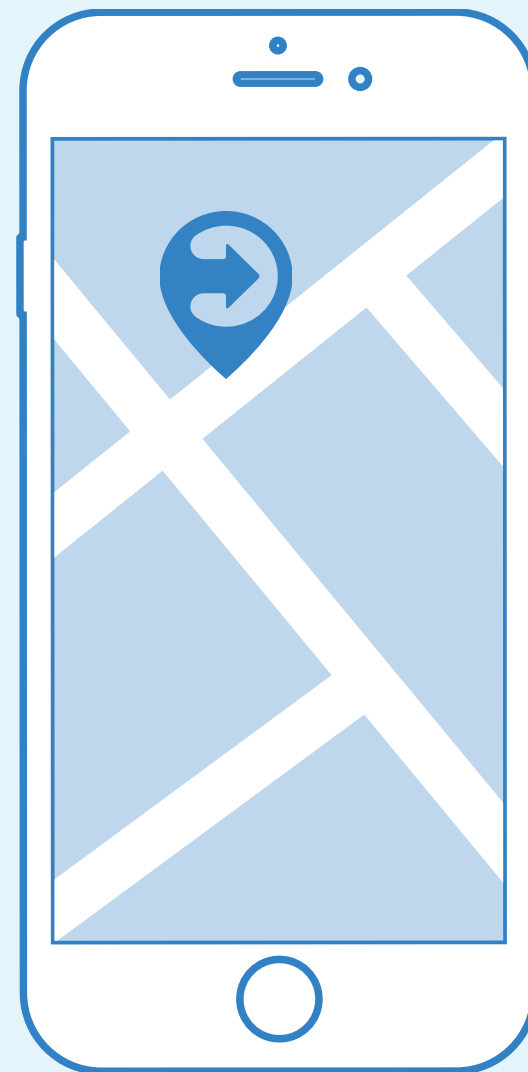


# ally Mobility Platform



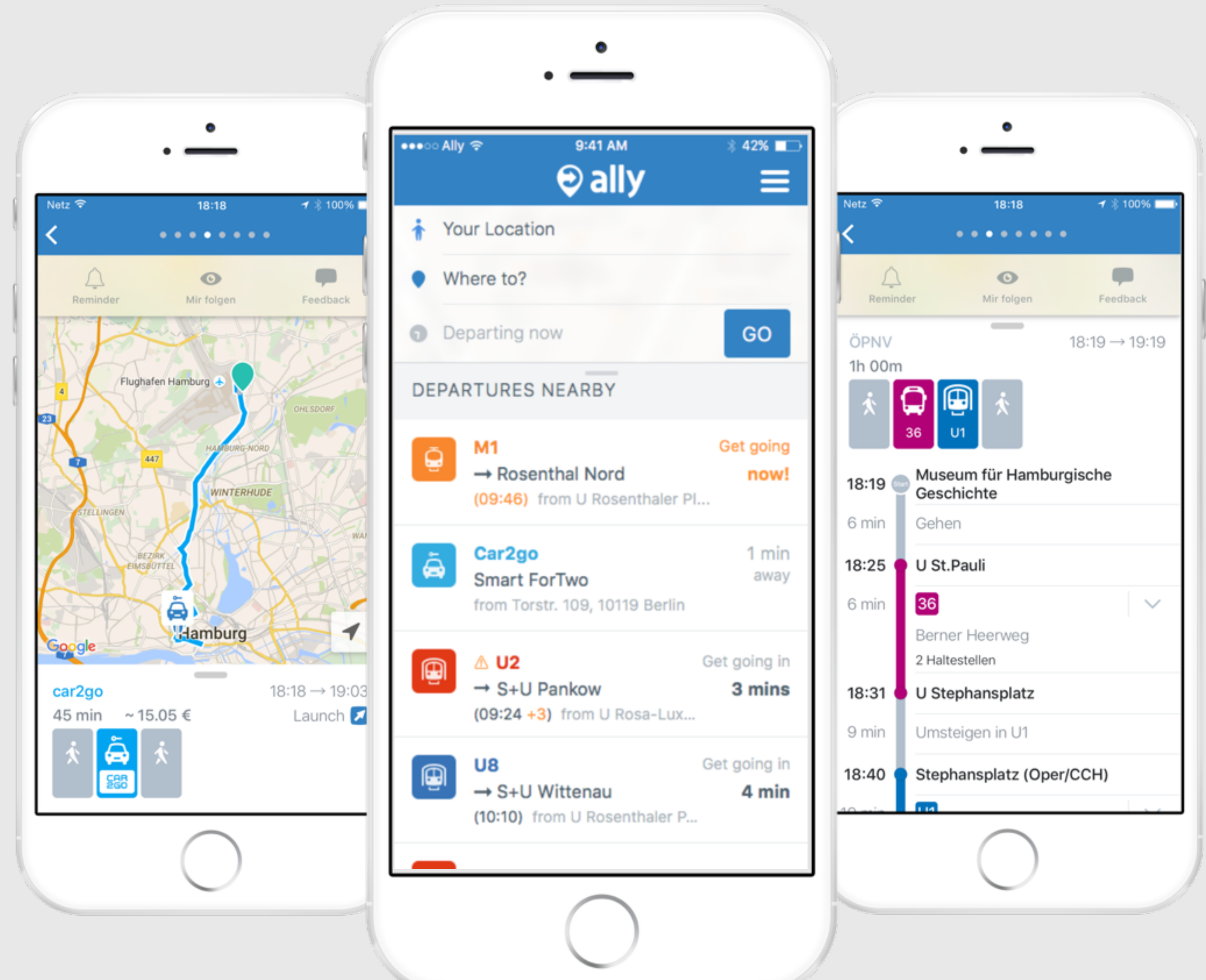
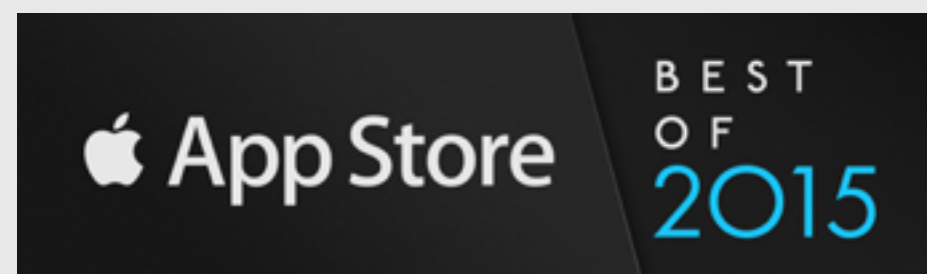
<http://go.allyapp.com/dar-tracking-viz>

# Inter-modal mobility: the ally app



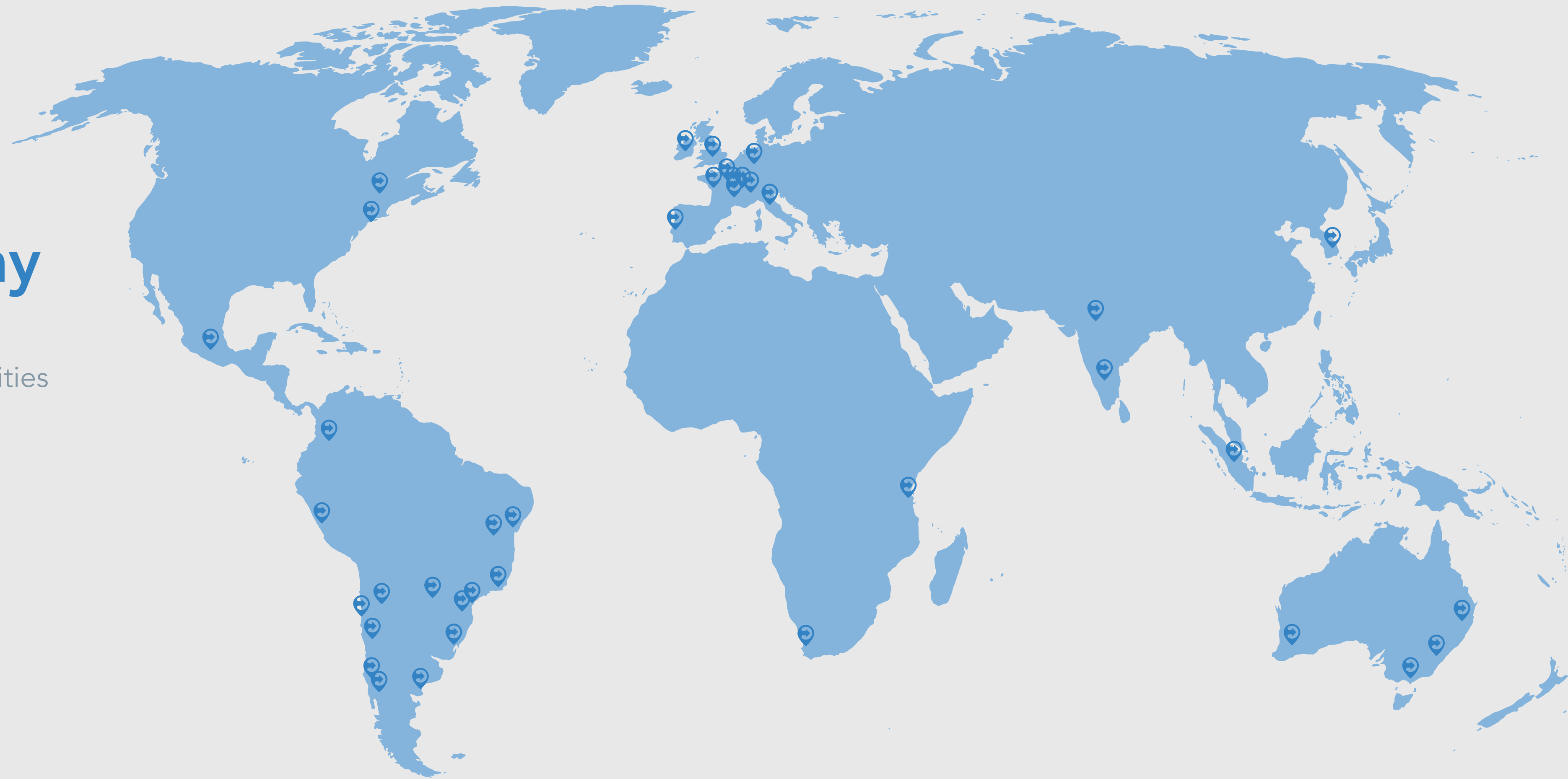
# ally app

ally is the leading multi-modal transport app for more than 100 cities around the globe.

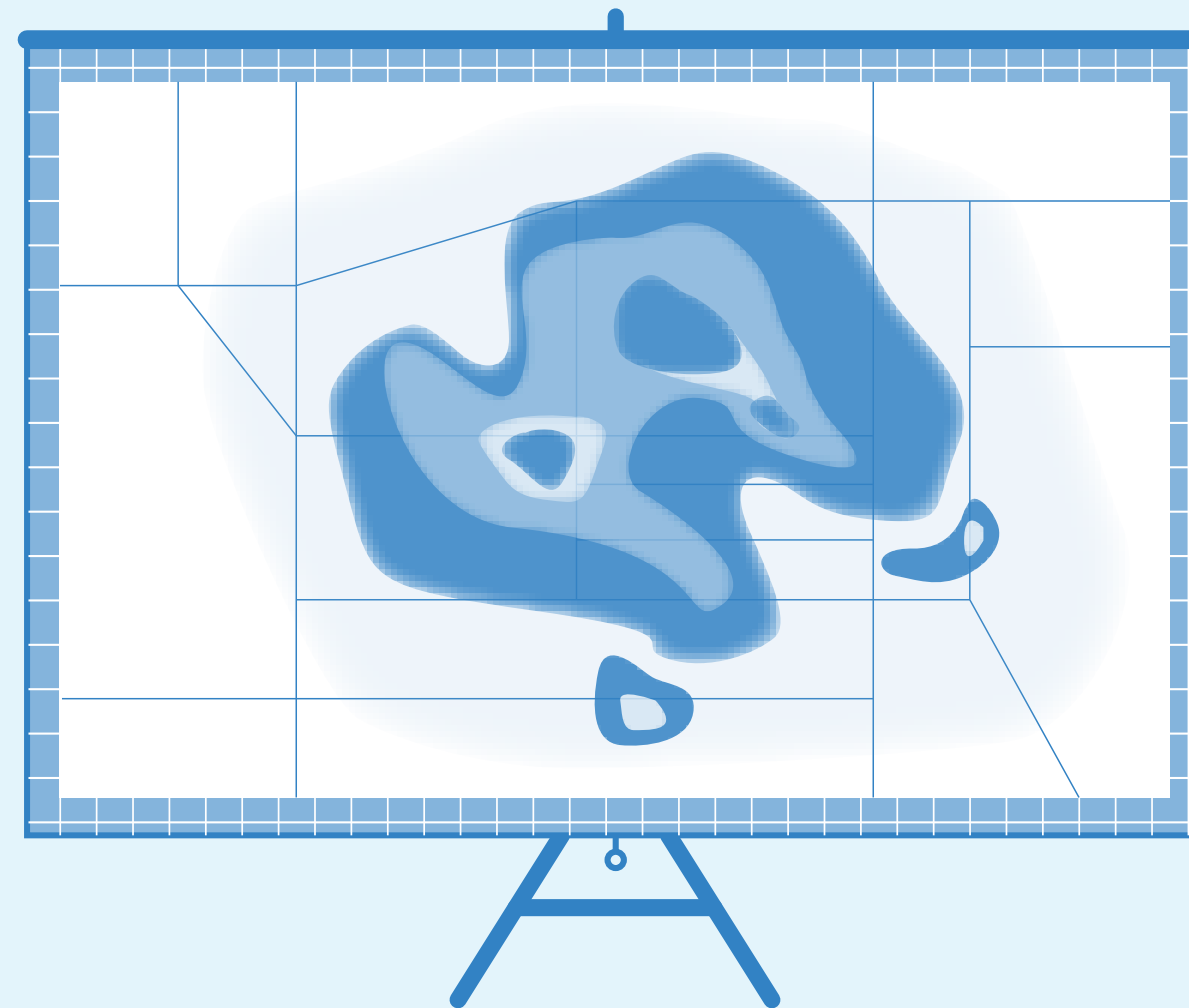


## Coverage Today

ally is present in more than 100 cities around the world.

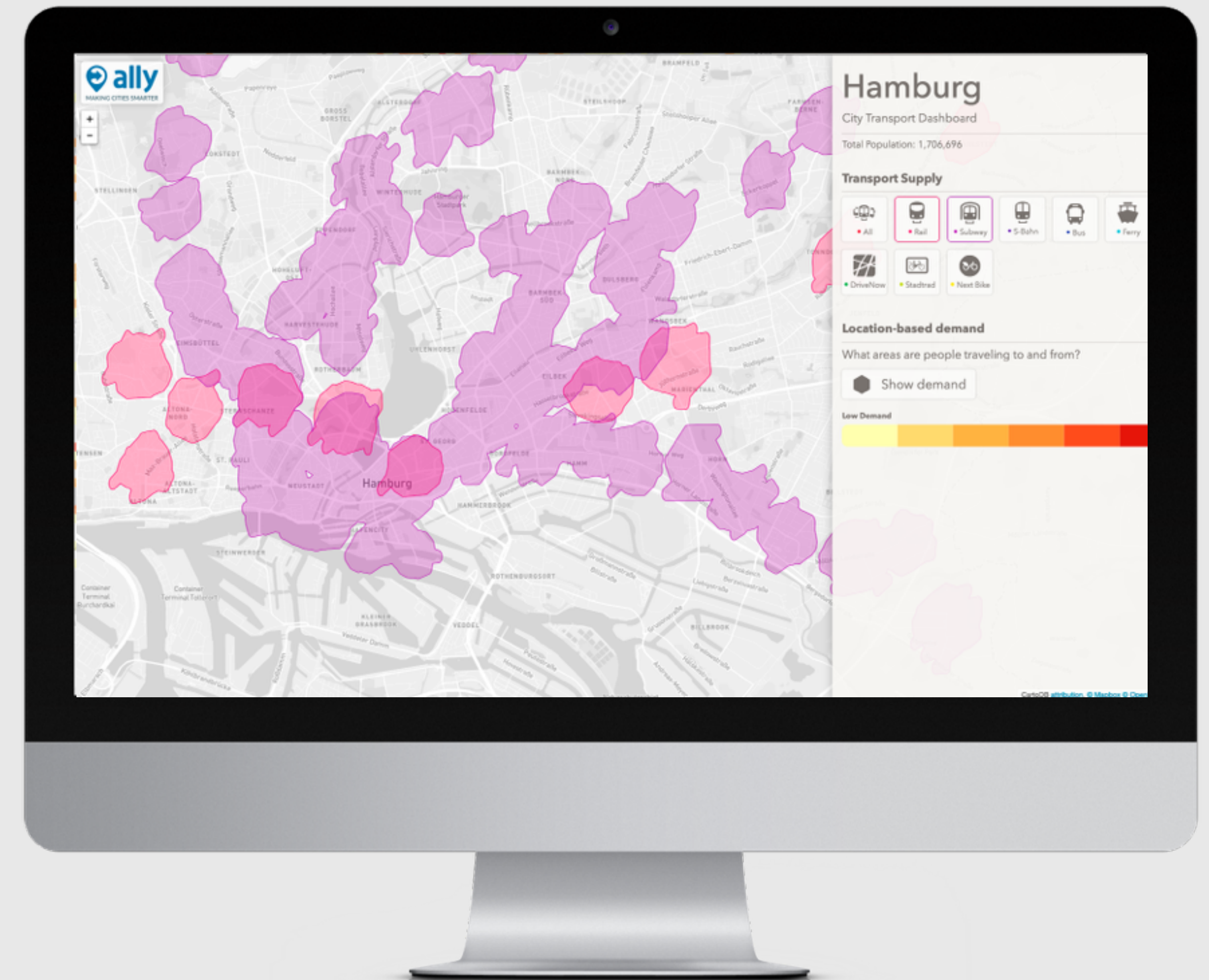


# Mobility Analytics



# Delivering smart city insights

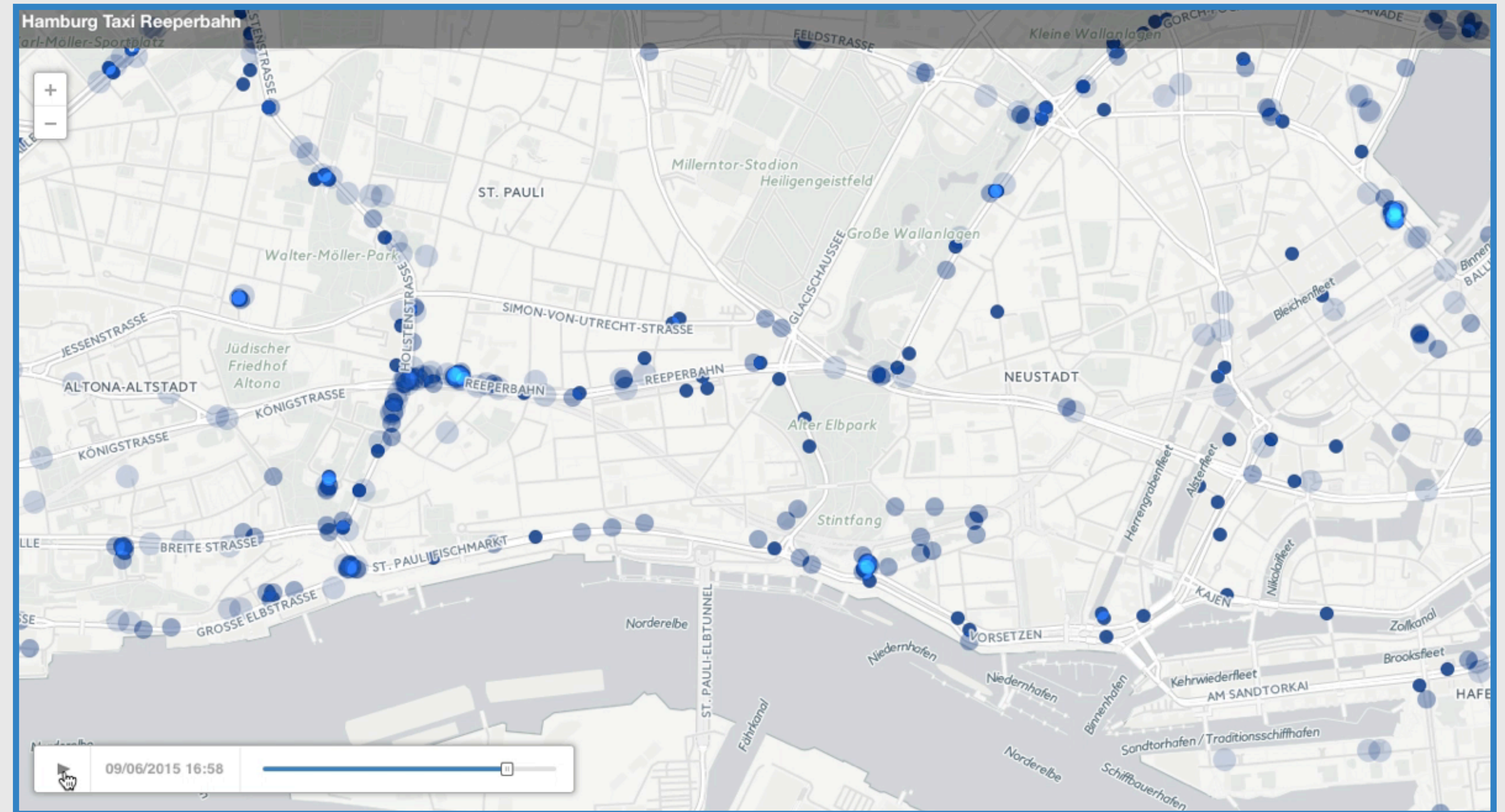
- Supply
- Demand
- Algorithms for on-demand services



# City Dashboard

Demo

A night out at Reeperbahn!

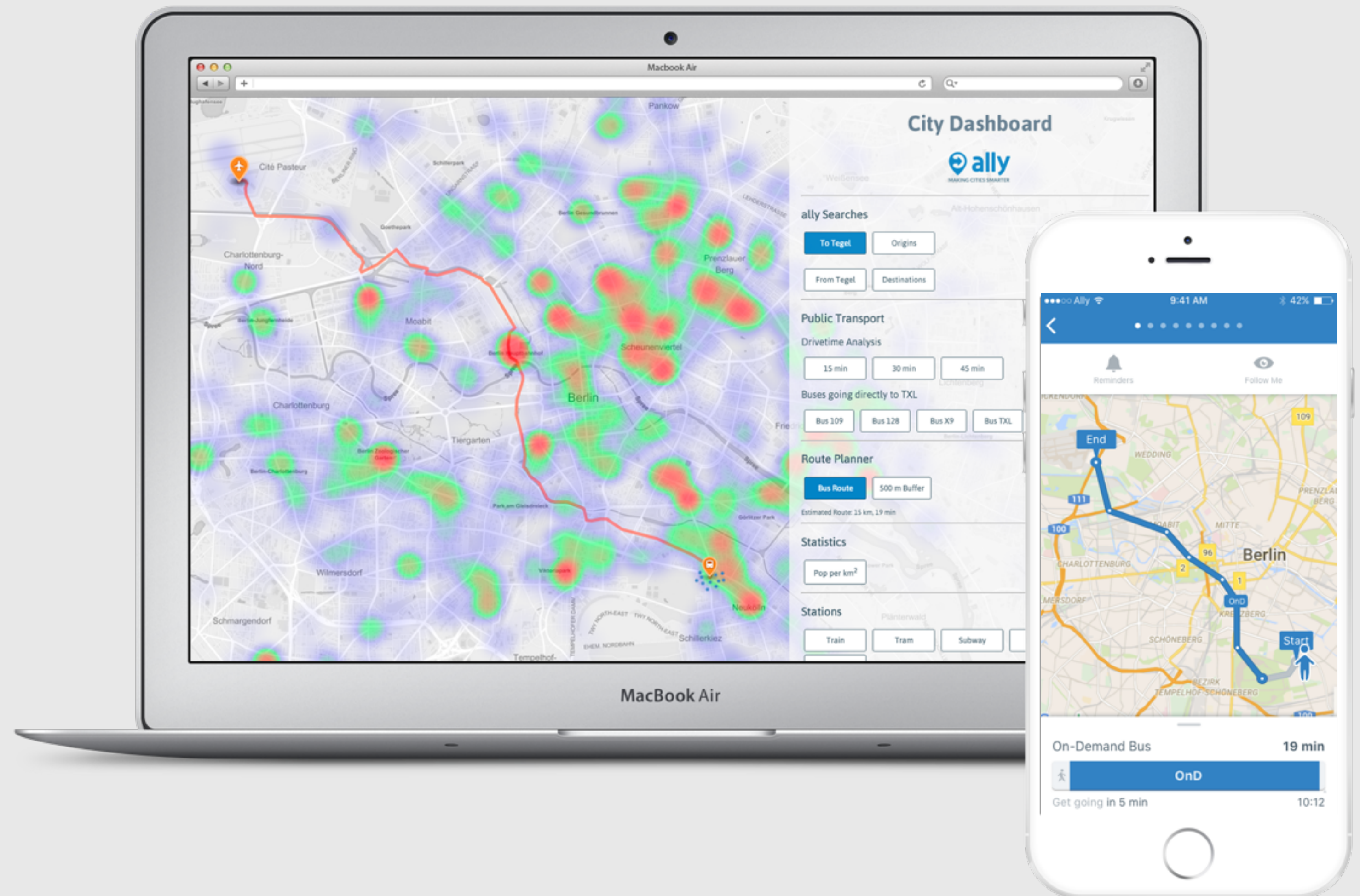


# On-Demand Mobility



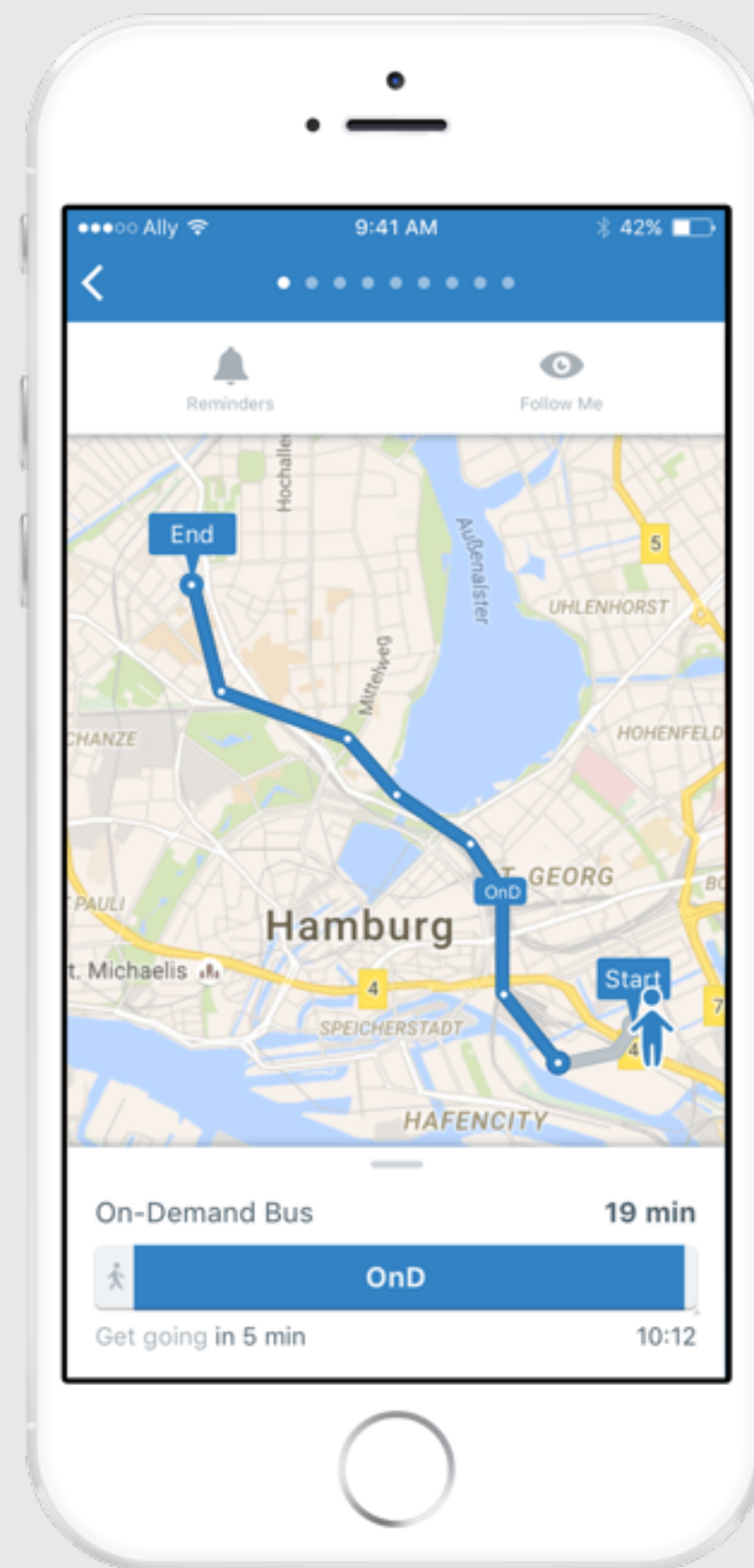
# On-Demand Mobility

By constantly analysing supply and demand and applying algorithms, we can provide demand driven utilization for buses and shared vehicles.



<http://go.allyapp.com/city-insights/TXL/>

# Summer 2016: Demand-responsive buses on the ground



# We'd love to hear from you!

---

Uli Strötz

[uli@allyapp.com](mailto:uli@allyapp.com)

+49 176 47330230

---

 [company.allyapp.com](http://company.allyapp.com)

 [facebook.com/company.allyapp](https://facebook.com/company.allyapp)

 [@theallyapp](https://twitter.com/theallyapp)

